

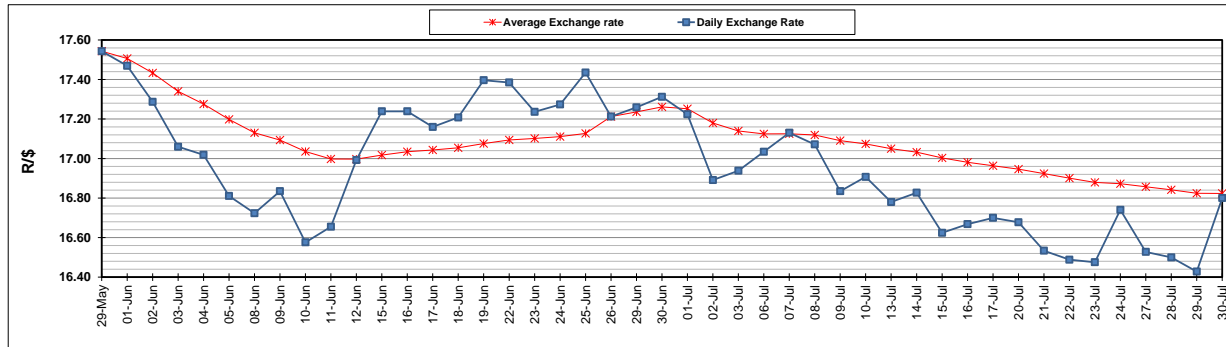
	PETROL 95 ULP	PETROL 93 ULP & LRP	DIESEL 0.05%	DIESEL 0.005%	ILL. PAR.
GAUTENG PUMP PRICE (SA c/l) AS FROM 01/07/2020	1,512.000	1,483.000	-	-	-
WHOLESALE PRICE (SA c/l) AS FROM 01/07/2020	-	-	1,303.560	1,307.960	703.828
SINGLE NATIONAL MAXIMUM RETAIL PRICE	-	-	-	-	882.000
BASIC FUEL PRICE - 30/07/2020 (SA c/l)	526.418	519.070	569.110	573.258	506.407
PRESS RELEASE CONTRIBUTION TO BFP 01/07/2020 - 30/07/2020 (SA c/l)	564.770	545.770	552.630	557.030	499.128
UNIT OVER/(UNDER) RECOVERY - 30/07/2020 (SA c/l)	38.352	26.700	(16.480)	(16.228)	(7.279)
AVERAGE BASIC FUEL PRICE 26/06/2020 - 30/07/2020	550.073	537.086	577.718	582.165	513.348
AVERAGE UNIT OVER/(UNDER) RECOVERY 26/06/2020 - 30/07/2020	(5.943)	(10.876)	(45.848)	(45.415)	(39.900)

ANALYSIS MOVEMENT OF AVERAGE OVER/(UNDER) RECOVERY

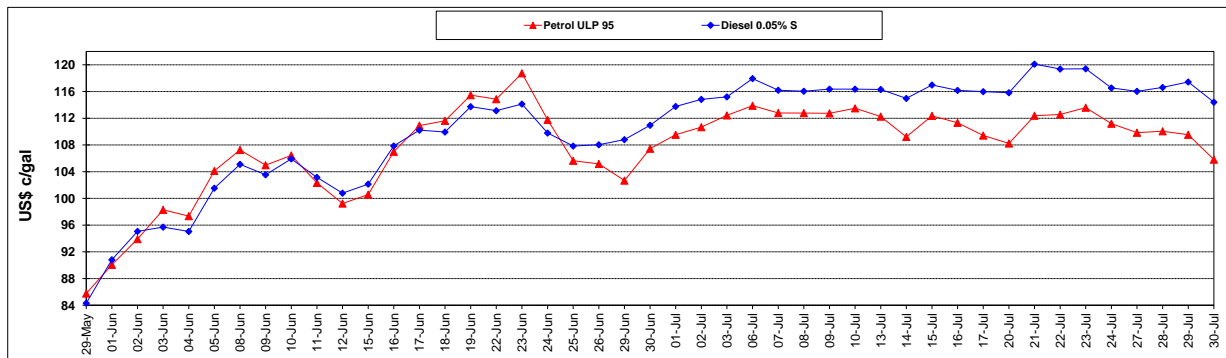
	PETROL 95	PETROL 93	DIESEL 0.05%	DIESEL 0.005%	ILL. PAR.
- MOVEMENT IN INTERNATIONAL PRODUCT PRICES	(15.873)	(20.572)	(56.277)	(55.924)	(49.167)
- MOVEMENT IN EXCHANGE RATE	9.930	9.696	10.429	10.509	9.267
AVERAGE UNIT OVER/(UNDER) RECOVERY 26/06/2020 - 30/07/2020	(5.943)	(10.876)	(45.848)	(45.415)	(39.900)

R/\$ EXCHANGE RATE - (R/\$16.8000 - 30/07/2020)

EXCHANGE RATE USED IN BASIC FUEL PRICE



INTERNATIONAL PRODUCT PRICES OF BASKET USED IN BASIC FUEL PRICE



BASIC FUEL PRICE IN SA CENTS PER LITRE

